



# Chilwell Chronicle



All Different

All Equal

All Achieving

Message from the Headteacher - Mrs. Nanette Wragg



Dear Chilwell Families,

As the autumn term comes to a close, we reflect on what has been a busy, fun-filled, and productive term. Our newest Reception pupils have impressed us all with the fantastic way they've settled into school,

consistently demonstrating our values and working hard to learn new skills.

As I've walked through the school, visiting class after class, All primary schools have a particular busyness at this time of year, I am always struck by the joy and enthusiasm our pupils bring to this week. In between productions, rehearsals, and the Winter Fayre, they have remained focused and determined in their learning. Simply brilliant!

Thank you for your support of the productions and the Winter Fayre this week. We are thrilled to share that the Fayre raised an incredible £900! This will be split between school funds, which will be used by our pupil leadership team, and a donation to our local food bank.

On behalf of all the staff here at Chilwell Croft, I would like to wish you a happy and restful break. We look forward to welcoming you back in the New Year.

See you on the 7<sup>th</sup> January and don't forget to keep reading!

Mrs. N Wragg  
Headteacher  
M.Ed., NPQH, EYPS

## DATES FOR YOUR CALENDAR

Mon 6 <sup>th</sup> Jan	Inset Day - School Closed for all Children
Tues 7 <sup>th</sup> Jan	Children Back from Holidays - 8.40am Start
Tues 14 <sup>th</sup> Jan	Inner City Academy Sports Festival - Selected Year 5/6 Students
Thurs 16 <sup>th</sup> Jan	Attendance Trip for Selected Children
Fri 17 <sup>th</sup> Jan	Science Workshop at King Edwards - Selected Students
Mon 20 <sup>th</sup> Jan	Chinese New Year Assembly - All Dolphin Parents Are Welcome To Attend at 2.50 pm
Tues 21 <sup>st</sup> Jan	Boccia Event for Selected Students
Thurs 23 <sup>rd</sup> Jan	Year 3/4 Steps to Success Festival - Selected Students
Fri 24 <sup>th</sup> Jan	Science Workshop at King Edwards - Selected Students
Mon 27 <sup>th</sup> Jan	Panthers Visit to Birmingham Open Media Headquarters
Tues 28 <sup>th</sup> Jan	Inner City Academy Sports Festival - Selected Year 5/6 Students
Wed 29 <sup>th</sup> Jan	Year 3/4 Steps to Success Festival - Selected Students
Wed 29 <sup>th</sup> Jan	Basketball Competition Year 5/6 - Selected Students
Fri 31 <sup>st</sup> Jan	Science Workshop at King Edwards - Selected Students
Fri 14 <sup>th</sup> Feb	Last day of Half Term - School to Finish at 3.30 pm
Mon 24 <sup>th</sup> Feb	Children Back from Half Term Holidays - 8.40am Start
Wed 5 <sup>th</sup> - Fri 7 <sup>th</sup> Mar	Year 6 Residential - Condoover Hall (Shropshire)
Mon 17 <sup>th</sup> Mar	REC - Ash End Farm Trip
Thurs 10 <sup>th</sup> Apr	Last Day of Term
Fri 11 <sup>th</sup> Apr	Inset Day - School Closed for all Children
Mon 28 <sup>th</sup> Apr	Children Back from Half Term Holidays - 8.40am Start
Wed 30 <sup>th</sup> Apr	Yr 1 - Botanical Garden Trip



# Chilwell Chronicle

## Weekly Attendance

Terrific Tigers	76.00%	
Lucky Lions	92.00%	
Dazzling Dolphins	92.00%	
Fantastic Flamingos	89.00%	
Legendary Leopards	89.00%	
Pleasant Pandas	91.00%	
Perfect Parrots	90.00%	
Proud Penguins	93.00%	
Fabulous Foxes	98.00%	
Learning Lemurs	95.00%	
Kind-hearted Kangaroos	93.00%	
Shrewd Shrews	95.00%	
Charming Cheetahs	94.00%	
Powerful Panthers	93.00%	



4	School days missed in an academic year	100%	Outstanding
7	School days missed in an academic year	98%	Very Good
10	School days missed in an academic year	96%	Good
11	School days missed in an academic year	95%	Almost There
11	School days missed in an academic year	94%	Improvement Needed
20	School days missed in an academic year	90%	Concerned
29	School days missed in an academic year	85%	Very Concerned

Thank you to all who are working hard to achieve our 97% target. We can only do this if we all work together.

Our grand total attendance this term is:  
**94.90%**

### Attendance Competition!

Well done to Saja Al-Bakri who has won the Bike this term.



### Top Class Attendance

1st Foxes - 98%  
2nd Lemurs & - 95%  
3rd Cheetahs - 94%





# Chilwell Chronicle

## Year 1 – Week of Learning

This week, children in Year 1 have been learning about 3D shapes in Maths. In Art, Emma Burleigh where they had the opportunity to explore watercolours and use techniques similar to those of Emma. They also learned about the importance of sharing in R.E. Additionally, the children had the wonderful opportunity to watch a theatre performance at school, which they thoroughly enjoyed.



## Christmas Jumper Day and Meal

Children wore festive Christmas jumpers in exchange for chocolate donations to support the Winter Fayre. They also enjoyed a delicious Christmas lunch with roast turkey and all the trimmings, spreading holiday cheer and giving back to those in need.



## Year 6 Visit to Panel Croft Village

Year 6 students visited Panel Croft Village to sing winter songs for the elderly residents. The children performed festive carols, and the residents clapped and sang along, creating a joyful atmosphere. It was a heartwarming moment, bringing the community together during the winter season.



## KS1 Onsite Theatre Performance

Key Stage 1 children enjoyed a lively onsite performance of Scrooge. The interactive show, full of colourful characters and holiday cheer, brought the classic Christmas tale to life, teaching valuable lessons about kindness and generosity in a fun and engaging way.



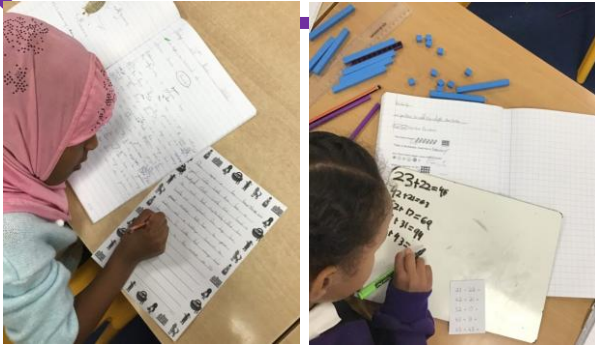


# Chilwell Chronicle

## Year 2

Year 2 students use Dienes blocks to add two-digit numbers by partitioning them into tens and ones, helping reinforce place value and build confidence in addition.

In English, students have been drafting their own versions of *Little Red Riding Hood*. After refining their ideas and sentences, they proudly published their final stories this week.



## SCARF Workshop

Pupils in Years 3 to 6 participated in SCARF workshops, which supported our PSHE curriculum by providing opportunities to explore and articulate their feelings, as well as discuss how to make healthy choices. Mrs. Welter shared positive feedback about our students, noting that they were "perfect role models" and contributed thoughtful comments throughout the sessions. Well done to all participants for exemplifying our values of respect and kindness!



## Winter Performances

Our students have truly shone in this year's winter performances! From the youngest to the oldest, every child brought their best to the stage, filling the hall with festive cheer and warmth. With enthusiasm and passion, they sang their hearts out, creating a magical atmosphere for all who attended. The teamwork and dedication they demonstrated were inspiring, and each performance left the audience smiling and full of holiday spirit. Congratulations to all our performers for their hard work and for making this year's winter celebration so special!





# Chilwell Chronicle

## Student Work Of The Week

Congratulations to Selsemina for being a runner-up in Shabana's Christmas card competition! Her creativity and effort truly shone through in her design, capturing the festive spirit beautifully. It's an amazing achievement to be recognized among so many talented participants. Well done, Selsemina - your hard work and imagination really stood out!





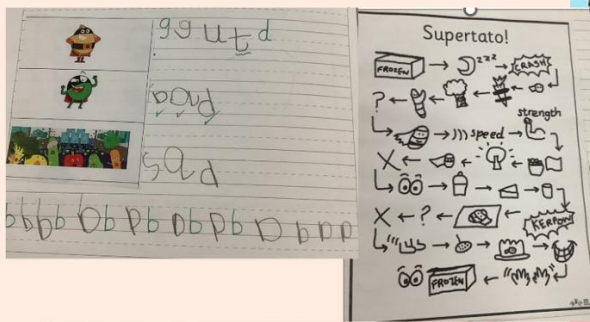
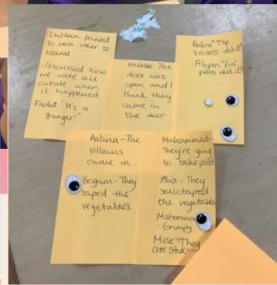
# Chilwell Chronicle

## WRITING IN RECEPTION

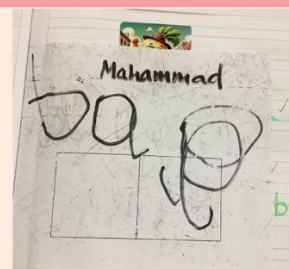
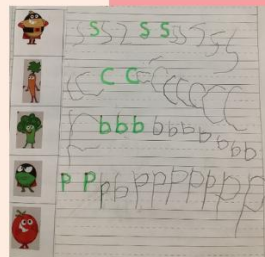
This half term Reception have been learning the story



The children came in from their break to find we had been paid a visit - lots of vegetables had been tied up! Who could it be? The children became detectives and made suggestions using the clues of who it could be. It was evil pea!!



Over the following few weeks the children learnt the story of Supertato using a story map. They can retell the story off by heart! They also used their phonics to write sounds and words.





# Chilwell Chronicle

## YOU SHOULD CHECK NHS 111 ONLINE / CALL 111 IF

- Pink / red eyes / cough / runny nose
- Ear pain less than 2 days
- Mild tummy pain that comes and goes

For up to date advice on COVID-19 and childhood illnesses/injuries visit: [www.nhs.uk](http://www.nhs.uk) OR  
<https://bwc.nhs.uk/>  
<https://www.birminghamandsolihullccg.nhs.uk/your-health/children-s-young-people-and-maternity-services-during-covid-19>

## YOU SHOULD CALL YOUR GP/111 IF

### APPEARANCE

- Mild allergic reaction (known or suspected)
- New rash that fades when you press it

### BEHAVIOUR

- Mild irritability/sleepier than normal
- Moderate tummy pain
- Vomiting and diarrhoea
- Ear pain for more than 2 days

### BREATHING

- Wheezing
- Fast Breathing

### OTHER

- Temperature
  - More than 39 in child aged 3-12 months
  - More than 38 in a child for 5 days or more
- Not passed urine for 12 hours

## YOU SHOULD GO TO A&E IF

### APPEARANCE

- Dizziness/feeling faint
- Rash that doesn't fade when you press it

### BEHAVIOUR

- Severe tummy pain

### OTHER

- Burn
- Possible broken bone

### OTHER

- Swallowed foreign objects
  - Especially magnets/batteries
- Temperature higher than 38 in a baby younger than 3 months old
- Your child has a specific health care plan that tells you to go to A&E
- Head injury

## YOU SHOULD CALL 999 / GO TO A&E IMMEDIATELY IF

### APPEARANCE

- Pale/Ashen/Mottled/Blue Colour
- Collapsed/unresponsive/loss of consciousness
- No obvious pulse or heartbeat
- Severe allergic reaction

### BEHAVIOUR

- Extreme
- Irritability
- Pain
- Sleepiness (can be woken but falls asleep immediately)
- Seizure/jerking movements/fit

### BEHAVIOUR

- Sucking in and out between ribs
- Flaring nostrils
- Extremely fast breathing
- Noisy breathing

### OTHER

- Bleeding from an injury, that doesn't stop after 10 minutes of pressure
- Overdose of medication or other substances

## MENTAL HEALTH SUPPORT 24/7 FOR ALL AGES IN BIRMINGHAM & SOLIHULL

Call 0800 915 9292 / 0121 262 3555

### In Birmingham (FTB) - age 0-18 Years

- 7 Days a Week 10am-6pm
- 0207 841 4470
- Email: [askbeam@childrenssociety.org.uk](mailto:askbeam@childrenssociety.org.uk)

### In Solihull (SOLAR) - age 0-18 Years

- Mon-Fri 8am-8pm 0121 301 2750
- Weekends and Evenings 8pm-8am 0121 301 5500

### Kooth – For 11-25 year olds in Birmingham and Solihull

Peer to peer support through moderated discussion forums, self-care tools and resources and online mental health counselling and chat services from 12pm-10pm during the week, and 6pm-10pm at weekends: [www.kooth.com](http://www.kooth.com)



# Chilwell Chronicle

## PARENT WORKSHOP

KS2 Reading - Tuesday 7th January 2024

EYFS/ KS1 Phonics - Tuesday 14th January 2024

KS2 Maths - Tuesday 21st January 2024

Internet Safety - Tuesday 28th January 2024

Special Education - Tuesday 4th February 2024

EYFS/Year 1 Talk for Writing - Tuesday 11th  
February 2024

9 am – 10 am.

Refreshments available







# Chilwell Chronicle





# Chilwell Chronicle





# Chilwell Chronicle

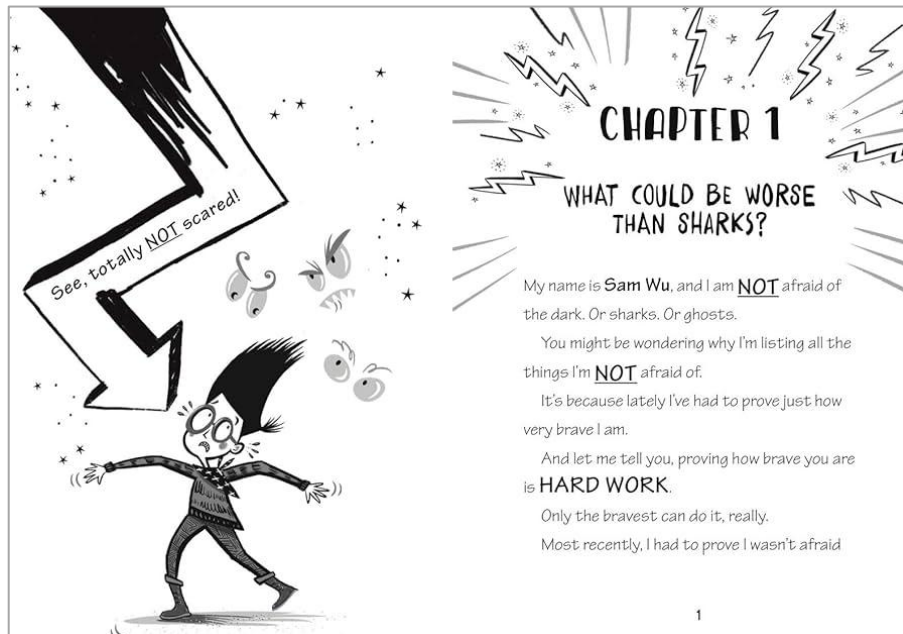
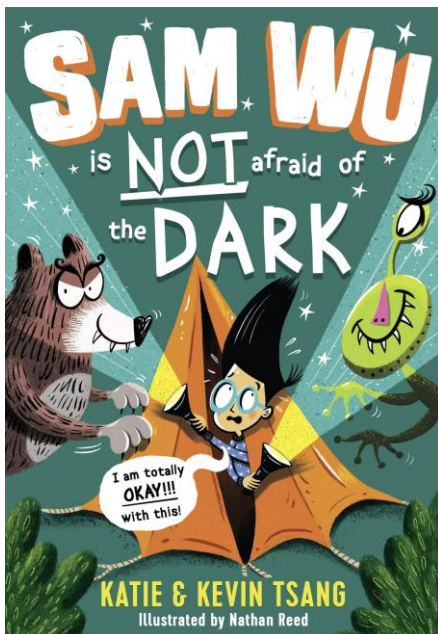
## Sam Wu Is Not Afraid Of The Dark – Katie & Kevin Tsang Weekly Book Review – Miss Brown

I want to share with you a fantastic book that I think many of you will enjoy: Sam Wu Is Not Afraid of the Dark by Katie and Kevin Tsang. It's part of a fun series about a boy named Sam Wu who's always trying to prove just how brave he really is.

In this story, Sam goes camping with his friends and family. Sounds fun, right? But for Sam, camping means one thing: THE DARK. And the dark can be scary, especially when people start telling spooky stories about bears, ghosts, and mysterious creatures lurking in the forest. Sam is determined to show he's not afraid, but as the night goes on, things don't go exactly as planned.

This book is hilarious and full of silly, exciting moments that will make you laugh out loud. But it's also about something we can all relate to; facing our fears. Whether it's the dark, creepy creatures, or even what others think of us. Sam's story reminds us that being brave doesn't mean not being scared—it's about trying your best even when you are. I love how this book blends humour, adventure, and important lessons about friendship and courage. Plus, the illustrations add so much fun to the story. If you've ever been scared of something but found a way to overcome it, you'll love this book.

I can't wait to hear what you think! Happy reading!





# Chilwell Chronicle

## Gogna School Wear

*Wishing all of our Parents and Families a very*

MERRY

*Christmas*

& HAPPY NEW YEAR

We would like to offer our loyal customers



MONEY SAVING DISCOUNTS OFF

SCHOOLWEAR - ACCESSORIES - G-STORM

[www.gogna.me](http://www.gogna.me)  
[www.g-storm.co.uk](http://www.g-storm.co.uk)

T&C's Apply  
Exp 10/01/25



# Chilwell Chronicle

## Spring 1 PE Dates

Please find below the PE days for school. Children will need to come into school wearing their PE kit, which is the following:

- PE Kit - Yellow t-shirt, black jogging bottoms/shorts/leggings and black trainers.

**DISCLAIMER:** Dates may occasionally change, and while we will try to notify families in advance, this may not always be possible.

### Reception

Monday 20<sup>th</sup> January  
Monday 3<sup>rd</sup> February

### Year 1 - Every Thursday

### Year 2

Thursday 16<sup>th</sup> January  
Monday 20<sup>th</sup> January  
Thursday 30<sup>th</sup> January  
Monday 3<sup>rd</sup> February  
Thursday 13<sup>th</sup> February

### Year 3

Wednesday 8<sup>th</sup> January  
Tuesday 14<sup>th</sup> January  
Wednesday 22<sup>nd</sup> January  
Tuesday 28<sup>th</sup> January  
Wednesday 5<sup>th</sup> February  
Tuesday 11<sup>th</sup> February

### Year 5 - Every Thursday

### Year 4

Thursday 9<sup>th</sup> January  
Wednesday 15<sup>th</sup> January  
Thursday 23<sup>rd</sup> January  
Wednesday 29<sup>th</sup> January  
Thursday 6<sup>th</sup> February  
Wednesday 12<sup>th</sup> February

### Year 6

Wednesday 15<sup>th</sup> January  
Wednesday 29<sup>th</sup> January  
Wednesday 12<sup>th</sup> February



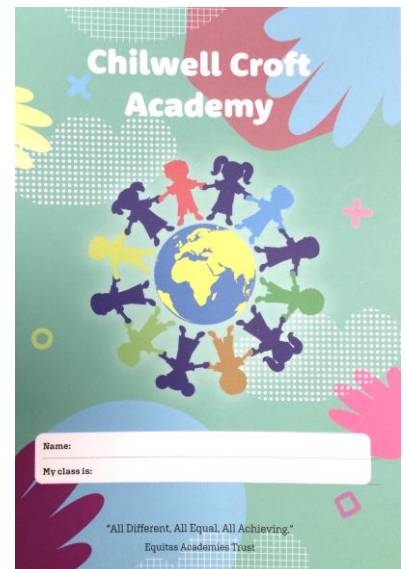
# Chilwell Chronicle

## What's in Chilwell Crofts Planner?

### Key Words KS1

How many can you read and spell?

a	day	in	old	they
about	did	is	on	this
after	dig	it	once	three
again	do	jump	one	time
all	dog	just	or	to
am	don't	last	our	too
an	door	laugh	out	took
and	down	like	over	tree
another	first	little	people	two
are	for	lived	play	up
as	from	look	pull	us
at	get	love	push	very
away	girl	made	put	want
back	go	make	ran	was
ball	going	man	said	water
be	good	many	saw	way
because	got	may	school	we
bed	had	me	see	went
been	half	more	seen	were
big	has	much	she	what
boy	have	mum	should	when
brother	he	must	sister	where
but	help	my	so	who
by	her	name	some	will
called	here	new	than	with
came	him	next	that	would
can	his	night	the	yes
can't	home	no	their	you
cat	house	not	them	your
come	how	now	then	
could	I	of	there	
dad	if	off	these	





# Chilwell Chronicle

## CCA Term Dates 24/25

### AUTUMN TERM 2024

Term Starts: Wednesday 4 September 2024  
Half-term: Monday 28 October 2024 to Friday 1 November 2024  
Term ends: Friday 20 December 2024  
Inset Day: Friday 25 October 2024

### SPRING TERM 2025

Term Starts: Tuesday 7 January 2025  
Half-term: Monday 17 February 2025 to Friday 21 February 2025  
Term ends: Friday 11 April 2025  
Inset Day: Monday 6<sup>th</sup> January 2025

### SUMMER TERM 2025

Term Starts: Monday 28 April 2025  
Half-term: Monday 26 May 2025 to Friday 30 May 2025  
Term Ends: Friday 18 July 2025  
Inset Day: Friday 11<sup>th</sup> April 2025, Friday 13<sup>th</sup> June 2025  
Bank Holiday: Monday 5<sup>th</sup> May 2025

## MCAS

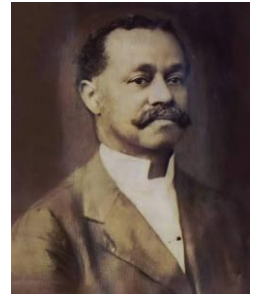
MCAS (My Child At School) is an app which the school uses to communicate with parents. The app can be used by parents to pay for school trips, pay for your child's school dinners or book your child in breakfast club/wraparound provision. It is important that all parents have signed up on the app and have it ready for use for the upcoming half term. If you require extra support, please contact or visit the school office.



## Scientist of the Week – Charlie Henry Turner

Well known for his discovery that insects can hear and alter behaviour based on their previous experience.

Scan the QR code to discover more fun facts.



## Phonics

Here is the sound of the week:

