



# Chilwell Chronicle



All Different

All Equal

All Achieving

## Message from the Headteacher - Mrs. Nanette Wragg



Dear Chilwell Families,

It's been a lovely day in school watching our Year 6 pupils enjoy some activities a well deserved break following their fantastic efforts each day this week with their SATs testing. Each and every pupil showed determination to do their best, we are very proud of you!

Well done and thanks to the rest of the school community who helped with breakfast, room changes, and support for the tests. Well done to all pupils who moved around school so carefully to ensure that Year 6 could concentrate brilliantly.

Our pastoral team have launched a lego competition this week, can you create an original lego construction for the exhibition? Have a go and email your pictures to the team, we would love to see your ideas!

Next Friday is the last day of half term, this is also World Cultural Day. We have so many fantastic cultures in our global community for us to celebrate and learn about each other, a lovely end to this half term.

Hopefully by now you would have received a copy of our Ofsted report, do take the time to read the inspectors positive reflections of our school community.

Mrs. N Wragg  
Headteacher  
M.Ed., NPQH, EYPS

## DATES FOR YOUR CALENDAR

Mon 20 <sup>th</sup> May	Shrews Visit to Birmingham Open Media Headquarters
Tues 21 <sup>st</sup> May	Holiday Learning/Club - Parent Workshop
Wed 22 <sup>nd</sup> May	Parliament Trip Yr 6 Leadership Team + Competition Winners
Wed 22 <sup>nd</sup> May	F2D Competition for 5 Year 5 Winners at King Edwards.
Thurs 23 <sup>rd</sup> May	Tamworth Castle - Year 4 Visit
Thurs 23 <sup>rd</sup> May	Parent Coffee & Chat Session at 2.30 pm
Thurs 23 <sup>rd</sup> May	REC/Yr 6 Class Photographs
Fri 24 <sup>th</sup> May	Cultural Day - Wear Cultural Clothes
Mon 27 <sup>th</sup> - Fri 31 <sup>st</sup> May	<b>Whit Week (School Closed)</b>
Mon 3 <sup>rd</sup> Jun	<b>School Opens at 8.40 am</b>
Tues 4 <sup>th</sup> Jun	AVFC Football Tournament - Selected children from Year 2
Wed 5 <sup>th</sup> Jun	Birmingham Wildlife Conservation Park - Penguins
Thurs 6 <sup>th</sup> Jun	Birmingham Wildlife Conservation Park - Parrots
Mon 17 <sup>th</sup> Jun	Kangaroos Visit to Birmingham Open Media Headquarters
Tues 18 <sup>th</sup> Jun	Aston Olympics - Selected Yr 5 Children
Wed 19 <sup>th</sup> Jun	Reception - Cannon Hill Park (Group 1)
Mon 24 <sup>th</sup> Jun	Reception - Cannon Hill Park (Group 2)
Wed 26 <sup>th</sup> - Fri 28 <sup>th</sup> Jun	Year 6 Residential
Fri 28 <sup>th</sup> Jun	SATs Year 6 Writing Assessments End
Fri 5 <sup>th</sup> Jul	Ninja Warrior - Cheetahs
Thurs 11 <sup>th</sup> Jul	Dudley Zoo - Year 2
Fri 12 <sup>th</sup> Jul	Ninja Warrior - Panthers



# Chilwell Chronicle

## Weekly Attendance

Lucky Lions	98.30%	
Terrific Tigers	94.00%	
Dazzling Dolphins	86.00%	
Fantastic Flamingos	96.50%	
Legendary Leopards	90.00%	
Pleasant Pandas	92.00%	
Perfect Parrots	89.00%	
Proud Penguins	93.50%	
Fabulous Foxes	93.50%	
Learning Lemurs	97.50%	
Kind-hearted Kangaroos	98.00%	
Shrewd Shrews	99.00%	
Charming Cheetahs	100%	
Powerful Panthers	100%	



4	School days missed in an academic year	100%	OUTSTANDING
7	School days missed in an academic year	98%	VERY GOOD
10	School days missed in an academic year	96%	GOOD
11	School days missed in an academic year	95%	ALMOST THERE
11	School days missed in an academic year	94%	IMPROVEMENT NEEDED
20	School days missed in an academic year	90%	CONCERNED ATTENDANCE OFFICE WILL BE IN TOUCH
29	School days missed in an academic year	85%	VERY CONCERNED

Thank you to all who are working hard to achieve our 97% target. We can only do this if we all work together.

Our grand total attendance this half term is:  
93.40%

## Attendance Competition!

Will you win?



Top Class Attendance  
1<sup>st</sup> Powerful Panthers & Charming Cheetahs - 100%  
2<sup>nd</sup> Shrewd Shrews - 99.00%  
3<sup>rd</sup> Lucky Lions - 98.30%

CONGRATULATIONS



# Chilwell Chronicle

Here at Chilwell Croft, we celebrate children's achievements through rewarding them with certificates. Below are the children's names who have received a certificate for the following:

- Value Child - for demonstrating the school values through demonstrating excellent behaviour and attributes in school.
- Reader - reading everyday at home and getting their reading diary signed off by their Parent/Carer



Our Value this month is Determination.

## Value Child

Dazzling Dolphins	Reneya Wilkins
Fantastic Flamingos	Melody Agbongiator
Legendary Leopards	Maysam Abdirahman
Pleasant Pandas	Faris Sharif
Perfect Parrots	Syed Yunus Ali
Proud Penguins	Lacey Swann
Fabulous Foxes	Rumaysa Yusuf
Learning Lemurs	Affan Sharif
Kind-hearted Kangaroos	Nuha Duboow
Shrewd Shrews	Lina Hassan
Powerful Panthers	Whole Class
Charming Cheetahs	Whole Class

## Reader of the Week

Dazzling Dolphins	Fathima Ali
Fantastic Flamingos	Liibaan Mahamoud
Legendary Leopards	Maryama Conteh
Pleasant Pandas	Bayan Mohamed
Perfect Parrots	Zahrah Uddin
Proud Penguins	Amira Adam
Fabulous Foxes	Ahmed Ali
Learning Lemurs	Paige Dalton
Kind-hearted Kangaroos	Khadeejah Hussein
Shrewd Shrews	Kadiatou Balde
Powerful Panthers	Ridwan Sabriye
Charming Cheetahs	Junior Kimwolo





# Chilwell Chronicle

## Year 1 - Life Education

This week in Life Education, Year 1 children have been looking at the importance of responsibilities. Year 1 explored the importance of money, where it comes from and how everyone earns money. Year 1 drew some pictures of what their family like to spend their money on.



## Cosy Corner's Lego Exhibition

This week our children have been very busy making their very own Lego pieces which have been featured in Cosy Corner's Lego Exhibition!... Everyone enjoyed creating with Lego and not only do we have some fantastic pieces on display, but the children also found it very therapeutic.

Guess what?... Now it's your turn. Have a go creating a Lego piece at home and email some pictures to enter our fantastic Lego competition with some fabulous prizes to be won! Deadline is 03/06/24

Embrace the Lego fever and enjoy creating!

Email: [Sbegum@chilwellcroftacademy.com](mailto:Sbegum@chilwellcroftacademy.com)

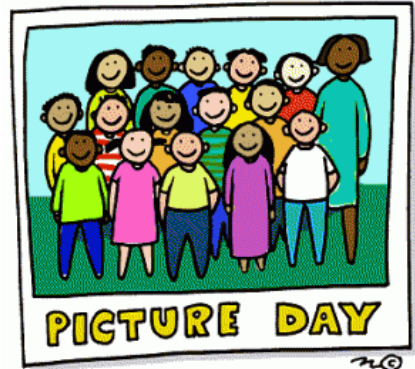




# Chilwell Chronicle

## Class Photo

Reception and Year 6 will have their class photo taken on Thursday 23rd May 2024. Please can all Parents/Carers ensure that children come in wearing their full school uniform.



## Reception



## New Reception Class September 2024

Please can new reception parents/carers confirm which parent drop in session they would like to come in:

- Tuesday 4th June 2024 - 2.00-3.00pm
- Wednesday 5th June 2024 - 3.30-4.30pm

It is important that you attend this session as you will need to collect your child's paperwork, which needs to be completed and returned to the office before the transition day on Wednesday 3rd July where you will have the opportunity to meet their class teacher and have a look around the reception classroom. For information, please contact the school office.

## SOS! SEN

SOS SEN are a SEND charity and they have a new SEND Walk in Advice centre opening up in Birmingham. It is open to all within Birmingham and surrounding areas. The first session is on the 11th June.

Click on the link to find out more information:

<https://sossen.org.uk/>





# Chilwell Chronicle



*Please have a read of our Ofsted report*

## **What is it like to attend this school?**

Pupils at Chilwell Croft benefit greatly from their time at the school. The school's motto, 'All different, all equal, all achieving', is fully embraced, and pupils feel accepted for who they are without fear of being judged. Pupils enjoy learning and having fun, thanks to staff who ensure that there are positive experiences both in and outside the classroom. The school offers a range of trips and visitors to enrich their learning.

The school has clear expectations for pupils' behaviour. Pupils understand these expectations and behave very well. In lessons, pupils are highly attentive and participate in learning enthusiastically.

The school has high expectations for pupils' achievement and does not place a ceiling on what they can learn. Leaders have taken appropriate action to ensure that what pupils learn is of high quality and broadens their experience of the world. Pupils speak very highly of their love of reading and readily talk to visitors about the more challenging work they are completing in mathematics.

## **What does the school do well and what does it need to do better?**

The school's curriculum is ambitious and purposefully designed to meet the needs of its pupils. For example, many pupils speak English as an additional language so leaders place a strong emphasis on the teaching of early language and reading. The school has worked effectively on early reading and ensures that all pupils are consistently taught how sounds correspond to letters or groups of letters. This work starts from the beginning of the Reception Year. Leaders have worked well with staff to ensure that they are skilled in identifying which pupils are at risk of falling behind. These pupils are rapidly supported to



# Chilwell Chronicle



help them catch up. All of this means that pupils are able to read with appropriate fluency. Furthermore, the school promotes well a love of reading. Pupils benefit from a range of class texts that they study together. For example, pupils in various year groups speak enthusiastically about the work they have completed on different versions of the 'Little Red Riding Hood' story.

In core subjects, the school has ensured greater consistency of learning through a review of the curriculum design. This has been effective in mathematics, for example, where pupils have more secure understanding of the procedural, conditional and disciplinary knowledge they need to be successful. However, pupils' understanding in some of the foundation subjects is not as secure. This is because leaders have not ensured that all staff are sufficiently clear about the key knowledge that pupils need to learn. In addition to this, sometimes teachers do not check pupils' understanding well enough. This means that misconceptions are not always identified and addressed, which slows some pupils' learning.

In response to the low writing scores in key stage 2 last year, the school has reviewed the curriculum. It has identified that there are historic gaps in some pupils' understanding in writing, which it is now beginning to address. This limits pupils' ability to be able to write with fluency appropriate for their age.

Pupils with special educational needs and/or disabilities have their needs accurately identified. Appropriate adaptations are made in class, with extensive extra support provided by trained staff or external agencies. This means that these pupils achieve well.

The school ensures that pupils understand how they should behave in school, and they behave with high levels of consideration for each other and are attentive in class. Leaders have a clear strategic oversight of behaviour, which enables them to act promptly to support pupils who might find it harder to meet their expectations. Leaders have more recently introduced a strategic approach to attendance, and work effectively to ensure that pupils attend school regularly.

Leaders have designed a personal development curriculum that prepares pupils well for life in modern Britain. This includes a carefully chosen series of visits and visitors, including trips to central Birmingham, a residential visit and links with a local football team. The school's spiritual, moral, social and cultural work is of a high quality.

Staff are supportive of leaders' work of in the face of some historic turbulence. They report that leaders are mindful of their workload and appreciate training opportunities. However, in some areas, leaders do not consistently review the impact of how well the curriculum is being delivered. This means that some inconsistencies and weaker practice remain in some areas of foundation subjects.





# Chilwell Chronicle

## CULTURAL DAY 24/05/24

*Chilwell Croft will be celebrating World Cultural Diversity Day (21st May) with our own Cultural Day on Friday 24th May 2024.*

*This year's theme is 'Discover and Experience Diversity' and we celebrate the cultural richness of our school and local community.*

*Friday will be a wonderful opportunity to recognise how unique we are within our school community.*

*On Friday, children can come to school wearing their cultural and traditional dress and there will be a special lunchtime menu at no cost and reflections on our assemblies which will have focused on World Cultural Diversity Day.*





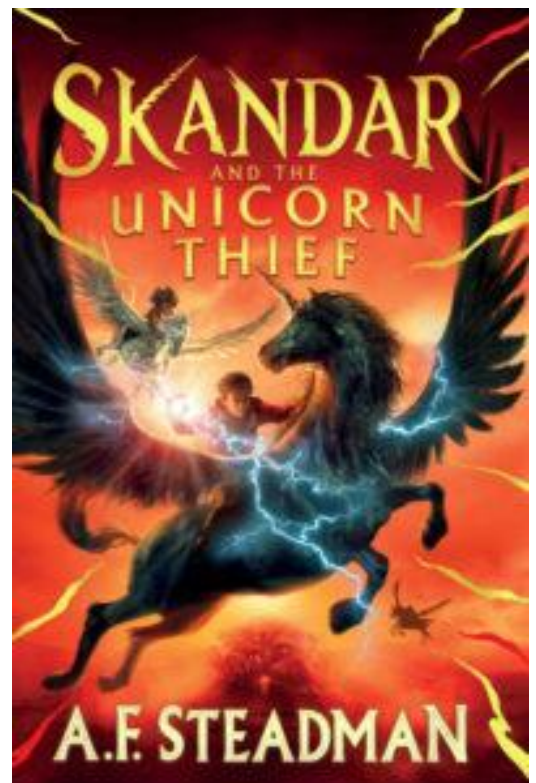


# Chilwell Chronicle

## SKANDAR AND THE UNIFORM THEIF A.F. STEADMAN WEEKLY BOOK REVIEW – MR GIBLEN

Take everything you think you know about unicorns and discard it. They are not the shiny, mythical creatures that you believe you know. They are ferocious, magical and deadly creatures who are very much real. Each year, mainlander children hope to pass the Hatchery exam in order to become unicorn riders.

Thirteen-year-old Skandar Smith is no different. He wants to be a hero. When it is finally Skandar's time to realise his dreams, everything seems to turn against him. The Island's most powerful unicorn is missing after being stolen by a haunting enemy that has returned with a vengeance and Skandar discovers a secret that could change everything and crush his dreams forever.





# Chilwell Chronicle



**Birmingham**  
City Council

**ATTENTION  
PARENTS**

## *New Applications Deadline*

For families applying for travel assistance for the first time and wish for it to be in place for the academic year 2024/25, it is imperative to complete the online application process by the deadline. This ensures that arrangements are made in advance for the upcoming academic year.

Ensure that you complete the necessary online form by the deadline to avoid any interruptions in your child's travel assistance for the upcoming academic year.

**LINK:** [Apply for Travel Assistance – Local Offer Birmingham](#)

Use the QR code below to apply



Deadline date 31<sup>st</sup> May 2024

Who needs to apply?

New applications

Moving to post 16 or post 19  
Education

Moving from Year 6 to year 7  
and changing schools







# Chilwell Chronicle







# Chilwell Chronicle

## Road Safety

Did you know every 16 minutes someone is killed or seriously injured on UK roads. Please drive safely on Summer Lane and do not park on double yellow lines to ensure the safety of our children.

A school crossing patrol officer will be available to assist parents/children crossing summer lane.

## ROAD SAFETY

<p><b>THINK</b></p> <p>about where you should cross.</p> 	<p><b>STOP</b></p> <p>in a safe place at the side of the road.</p> 	<p><b>USE YOUR EYES &amp; EARS</b></p> <p>to see and hear any approaching vehicles.</p> 
<p><b>WAIT</b></p> <p>until all the vehicles have passed.</p> 	<p><b>LOOK AND LISTEN</b></p> <p>again to make sure all is clear.</p> 	<p><b>CROSS</b></p> <p>the road. Keep looking and listening.</p> 



## Read Write Inc.

Read Write Inc (RWI) is a phonics-based programme which helps children learn to read whilst also developing a wide range of vocabulary and encouraging a love of stories.

Below are some useful links which you can use to support your children at home:

Ruth Miskin Parents' Page:

<http://www.ruthmiskin.com/en/parents/>

Ruth Miskin Facebook:

<https://www.facebook.com/miskineducation>

Free e-books for home reading:

<http://www.oxfordowl.co.uk/Reading/>

YouTube: [Ruth Miskin Training - YouTube](#)

## Phonics

Here is the sound of the week:



That's not fair



# Chilwell Chronicle

## Summer 1 PE Dates

Please find below the PE days for school. Children will need to come into school wearing their PE kit, which is the following:

- PE Kit - Yellow t-shirt, black jogging bottoms/shorts/leggings and black trainers.

### Reception

Thursday 18th April  
Thursday 2nd May  
Thursday 21st May  
Thursday 16th May

Year 1 - Every Thursday

Year 2 - Every Monday

Year 3 - Every Wednesday

Year 4

Monday 8th April  
Monday 22nd April  
Monday 6th May  
Monday 20th May

Year 5

Wednesday 10th April  
Tuesday 16th April  
Wednesday 24th April  
Tuesday 30th April  
Wednesday 8th May  
Tuesday 14th May  
Wednesday 22nd May

Year 6

Wednesday 10th April  
Wednesday 24th April  
Wednesday 8th May  
Wednesday 22nd May



# Chilwell Chronicle

## ☀️ COFFEE & CHAT



Come along and meet our friendly pastoral team for a chat very fortnight on Thursday at 2.30 pm.

What can the pastoral team offer?

Safe and comfortable environment, share experience, discuss issues relevant to you and your child and access to information.

- Thursday 9<sup>th</sup> May 2024
- Thursday 23<sup>rd</sup> May 2024
- Thursday 6<sup>th</sup> June 2024
- Thursday 20<sup>th</sup> June 2024
- Thursday 4<sup>th</sup> July 2024





# Chilwell Chronicle

## School Term Dates 23/24

### AUTUMN TERM 2023

Term Starts: Monday 4 September 2023

Half Term: Monday 30 October 2023 to Friday 3 November 2023

Term Ends: Friday 22nd December 2023

Inset Days: Friday 27th October, Friday 8th December

### SPRING TERM 2024

Term Starts: Monday 8 January 2024

Half Term: Monday 12 February 2024 to Friday 16 February 2024

Term Ends: Thursday 21st March 2024

Inset Days: Monday 8th January, Friday 22nd March

### SUMMER TERM 2024

Term Starts: Monday 8 April 2024

Half Term: Monday 27 May 2024 to Friday 31 May 2024

Inset Day: Friday 14th June

Term Ends: Friday 19th July 2024

## Breakfast Club

Breakfast Club is a paid club which you can book your child/ren into. Please contact the school office if you would like your child to attend. Club starts 7.30 am until 8.40 am.

### Daily Rate:

One Child	50p
One Family	£1

## Afterschool Clubs

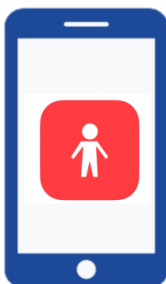
We also have afterschool clubs available which run from Monday to Thursday. Clubs are released before we break up for the term. Spaces are given on a first come first served basis.



## MCAS

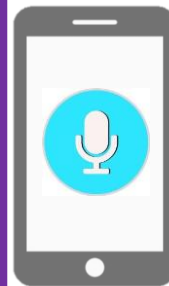
MCAS (My Child At School) is a new app which the school will be using to communicate with parents. The app can be used by parents to pay for school trips, pay for your child's school dinners or book your child in breakfast club/wraparound provision. It is important that all parents have signed up on the app and have it ready for use for the upcoming half term.

If you require extra support, please contact or visit the school office.



## SWOTLY

Chilwell Croft is a diverse school with families from more than 40 ethnicities. The school uses the app SWOTLY to communicate and engage with parents. This is a great app for parents who have English as a second language and prefer reading messages in their first language. If you are interested in receiving messages in your first language, please contact the school office and they will help get you set up on SWOTLY.





# Chilwell Chronicle

## Wraparound Provision

Wraparound provision is a paid service where children can stay afterschool and participate in a variety of different fun activities. Such as board games, sporting activities, and art and crafts.

*These services need to be paid in advance.*

*The service includes a snack break.*

Time	Day	Price
3:30 - 4:30 pm	Monday, Wednesday, Thursday, Friday	£4.00 per session
3:30 - 5:00 pm	Monday, Wednesday, Thursday, Friday	£5.50 per session
4:30 - 5:00 pm (Post club attendance)	Monday, Wednesday, Thursday, Friday	£1.50 per session
2:00 - 4:30 pm	Tuesday	£7.00 per session
2:00 - 5:00 pm	Tuesday	£8.50 per session
3:00 - 3:30 pm (Post club attendance)	Tuesday	£1.50 per session
2:00 - 3:00 pm	Tuesday	£4.00 per session
3:00 - 4:00 pm	Tuesday	£5.50 per session



# Chilwell Chronicle

## School Uniform

All students wear the same uniform, helping to level out the playing field and promote equality among the students.

If you are having trouble purchasing the correct uniform, please get in contact with the school office and we will be happy to support you.

## PE Kit

It is important the P.E kit is seen as an extension of our school uniform; therefore our high standards should be kept.

### JUMPER/CARDIGAN



Jumper  
School Uniform



Cardigan  
School Uniform

### BOTTOM



Black Trousers  
School Uniform



Jogging Bottoms  
PE Kit



Black Shorts  
PE Kit

### SHOES/BAG



School Uniform



PE Kit

Children can wear any of the following items below:

### POLO-SHIRTS



White Polo Shirt  
School Uniform



Yellow Polo Shirt  
PE Kit

### DRESS/SKIRT



Black Skirt  
School Uniform



Purple Summer  
School Uniform

### Hijab



Purple



Black

### PROHIBITED ITEMS

- ✘ NO TRACKSUIT BOTTOM OR JEANS
- ✘ NO LEGGINGS/JEGGINGS
- ✘ No Jewellery
- ✘ NO HOOPED EARRING – ONLY STUDED EARRINGS
- ✘ NO HOODIES/ANIMATED SWEATER





# Chilwell Chronicle

## Reading to Your Child

It might seem like everything has gone digital, but books still play a very important part in school life. As well as giving your child a head start, developing a love for reading.

- Make book and stories part of everyday life
- Building a reading story into a routine e.g. a story at bedtime
- Stick your feet up and let your child see you reading a book
- Go to the library so your child can choose some books to borrow for free
- Read in fun places e.g. a den made from blankets
- Give books as a birthday gift - this will show you value them
- Keep books in your bag or the car.



## Reading Diary Expectations

"Evidence suggests that children who read for enjoyment everyday not only perform better in reading tests than those who don't, but also develop broader vocabulary, increase general knowledge and better understanding of other cultures

In fact, reading for pleasure is more likely to determine whether a child does well at school than their social or economic background" (Pearson, 2021)

Here at Chilwell Croft, we place a high importance on daily reading, each child is provided with a reading diary and books to take home. we ask that the reading records are signed off daily and brought into school where they will be collected in, checked and signed off by an adult. This is a non-negotiable expectation.

Week Beginning: \_\_\_\_\_

Activity

Monday

Family Signature \_\_\_\_\_

Activity

Tuesday

Family Signature \_\_\_\_\_

Activity

Wednesday

Family Signature \_\_\_\_\_

Activity

Thursday

Family Signature \_\_\_\_\_

Activity

Friday

Family Signature \_\_\_\_\_

Activity

Saturday

Family Signature \_\_\_\_\_

Activity

Sunday

Family Signature \_\_\_\_\_



# Chilwell Chronicle

## Holiday Request

Parents are required, under the Education Act (1996) to ensure children attend school regularly. The Headteacher of a school has a discretionary power to authorise absence only in exceptional circumstances. **A family holiday is not an exceptional circumstance.** If you complete a leave of absence request form and the request is declined, (as it will be in the majority of cases) and you still take your child out of school, each parent within the household will potentially be issued with a £60 penalty notice for **each** child you have taken out of school.

## How We Can Help:

We understand that there are times when it is more difficult to encourage pupils to attend school. There is much that we can do together in partnership to improve attendance. Please contact school to arrange a time to chat with our pastoral team. We can talk through the strategies and support that we can give to make things better. Working together will ensure that your child is supported. Please pop into the school reception, chat to staff on the playground, or talk to a teacher at the end of day.

**ATTEND TODAY**  
ACHIEVE TOMORROW



**Be In SCHOOL**  
**Be On TIME**